



PLN NP Partnership Process



Disclaimer ! ””

“The information, content, and provisions available on this material presentation are for general informational purposes only. It is not, and is not intended to, constitute a legal binding. The provisions set forth in this material presentation may change at any time based on PLN NP internal policies.

None of the attendees of this event is entitled to raise objections, file lawsuits, or take legal action in connection with future changes to the information, content, and provisions provided on this material presentation.”



Content

- ➔ PLN at Glance
- ➔ PLN NP Ownership Operational Area
- ➔ PLN NP Share Ownership in IPP
- ➔ PLN NP Milestones
- ➔ PLN NP Business Solutions
- ➔ Group Structure
- ➔ Integrated Management System
- ➔ Overview of PLN NP Partnership Process ⚡
- ➔ Key Points of PLN NP Partnership Process
- ➔ Business Scheme ⚡
- ➔ Additional Demand Project Briefs ⚡
- ➔ Example of Additional Demand Business Scheme



LET'S GROW OUR BUSINESS

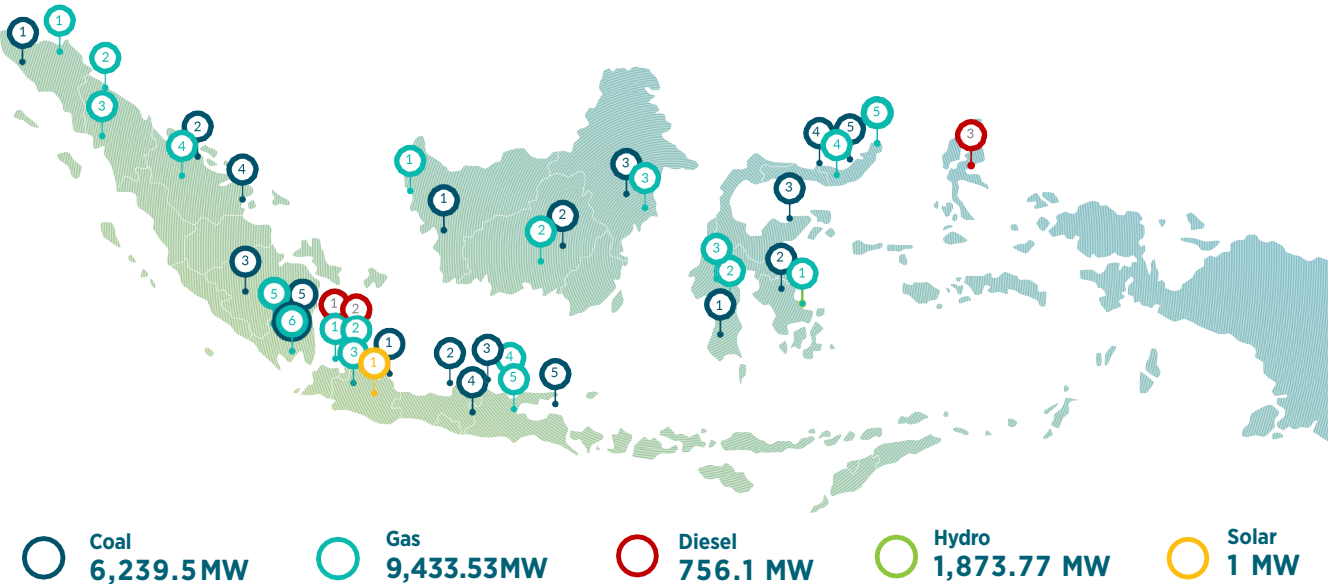
BY COLLABORATING TOGETHER

Placement Video



PLN NP at Glance

PLN NP Owns Power Plants throughout Indonesia with a Total Capacity of 18,304 MW in 2025



Total Electricity Production



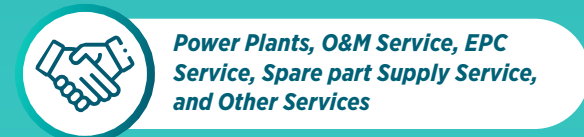
PLN NP's Employees



Status



Business Line



Total Assets



*Note: 1 USD = IDR 16.100

Vision

“To be a leading and trusted generation company for sustainable energy in Indonesia and global market”

Mission

- To maintain an excellent power plant performance as a core competency
- To build a leading innovative business for diversification and sustainable growth
- To accelerate the new and renewable energy business portfolio to support the achievement of Net Zero Emissions
- To acquire and build the best talent to run a responsive and adaptive organization

PLN NP Ownership Operational Area



Regional: Kalimantan

Coal Power Plants

1	Ketapang CFPP (20 MW)
2	Pulang Pisau GU (120 MW)
3	Kaltim Teluk GU (220 MW)

Gas and Non-Coal Power Plants

1	Kapuas GU (189 MW)
2	Kalselteng GU (171 MW)
3	Kaltimra GU (127 MW)

Regional: Sumatra

Coal Power Plants

1	Nagan Raya GU (220 MW)
2	Tenayan GU (220 MW)
3	Bukit Asam GU (260 MW)
4	Tembilahan CFPP (14 MW)
5	Tarahan GU (200 MW)
6	Sebalang GU (200 MW)

Gas and Non-Coal Power Plants

1	Arun GU (498 MW)
2	Belawan GU (1.197 MW)
3	Pandan GU (139,5 MW)
4	Pekanbaru GU (288,3 MW)
5	Bandar Lampung GU (208 MW)
6	Sebalang GU (21,5 MW)

Regional: Java

Coal Power Plants

1	Indramayu GU (990 MW)
2	Rembang GU (630 MW)
3	Ti Awar-Awar GU (700 MW)
4	Pacitan GU (630 MW)
5	Paiton GU (1.460 MW)

Gas and Non-Coal Power Plants

1	Muara Karang GU (2.177 MW)
2	Muara Tawar GU (2.471 MW)
3	Cirata GU (1.008 MW)
4	Gresik GU (2.222 MW)
5	Brantas GU (281,7 MW)

Supporting Unit

1	Unit Maintenance, Repair & Overhaul (UMRO)
2	Project Implementation Unit-1
3	Project Implementation Unit-2

Research-Based Solar Power Plants

1	Cirata SPP (1 MW)
---	-------------------

Regional: Sulawesi

Coal Power Plants

1	Punagaya GU (220 MW)
2	Nii Tanasa CFPP (24 MW)
3	Ampama CFPP (6,5 MW)
4	Anggrek CFPP (55 MW)
5	Amurang CFPP (50 MW)

Gas and Non-Coal Power Plants

1	Kendari GU (90 MW)
2	Sengkang GU (332 MW)
3	Bakaru GU (223 MW)
4	Gorontalo GU (171 MW)
5	Minahasa GU (247 MW)

*GU : Combine Cycle



Total Capacity
18.304 MW



Share Ownership in IPP

Operating (4.905 MW)

1	ASAHAN HPP 2×90 MW (PLN NP Share 36.61%) <i>Including O&M Services</i>
2	BANJARSARI CFPP 2×110 MW (PLN NP Share 29.15%) <i>Including O&M Services</i>
3	JAWA 7 (UNIT 1&2), SERANG CFPP 2×1.000 MW (PLN NP Share 30%)
4	CILACAP CFPP 2×300 MW Expansion 1, 1×660 MW Expansion 2, 1×1.000 MW (PLN NP Share 49%)
5	MAMUJU SPP 2×25 MW (PLN NP Share 10%)
6	CIRATA FLOATING PV SPP 145 MWac/192 MWp Consortium PLN NR – Masdar (PLN NP Share 51%)
7	IKN SPP SPP 1×50 MW (PLN NP Share 51%)

Construction Development (945 MW)

8	BATANG TORU HPP 4×127,5 MW (PLN NP Share 25%) <i>Underconstruction</i> Unit #1: COD 2026 Unit #2: COD 2026 Unit #3: COD 2026 Unit #4: COD 2026
9	SUMBAGSEL 1 CFPP 2×150 MW (PLN NP Share 10%) <i>Underconstruction</i>
10	TEMBESI FLOATING PV SPP 35 MWac/46 MWp (PLN NP Share 51%) <i>Underconstruction</i>
11	KARANGKATES FLOATING PV SPP 100 MWac (PLN NP Share 51%) <i>Underconstruction</i>

Share Ownership in O&M Company (1.320 MW)

1	TANJUNG JATI B#3 DAN #4 CFPP 2×660 MW (O&M Services operated by KPJB – KPJB is Joint Venture Company of PLN NP–Komipo)
2	PT GUOHUA TAIDIAN PEMBANGKIT JAWA BALI (PT GHPJB)

Operating (4.905 MW)

Construction Development (945 MW)

Share Ownership in O&M Company (1.320 MW)

PLN NP Milestones

1995

Company Establishment

- Established with 5 Units of Power Plants with a total capacity of 5.068 MW
- Based in CMMS (Computerized Maintenance Management Systems)

2000-2010

Stable Growth

- Received assets delegation of HEPP Cirata Units 5-8 and Muara Tawar CCPP, which increased PLN NP's total capacity to 6,469 MW
- PT PLN NP formed subsidiaries and affiliates
- Shares investment at IPP (S2P & BDSN)
- Best practice of operations and maintenance services

2011-2015

Operational Excellence

- First implementation of ISO 55001 Asset Management in Asia Pacific
- Malcolm Baldrige Emerging Industry Leader band
- Top 10% NERC for Gresik GU, Paiton GU, Muara Karang GU & Cirata GU
- The biggest CNG power-plant in the world

2016-2024

Corporate Transformation I

- Operational Excellence + Business Excellence
- Asset Based
- PJB Group Terintegrasi
- Malcolm Baldrige Industry Leader band

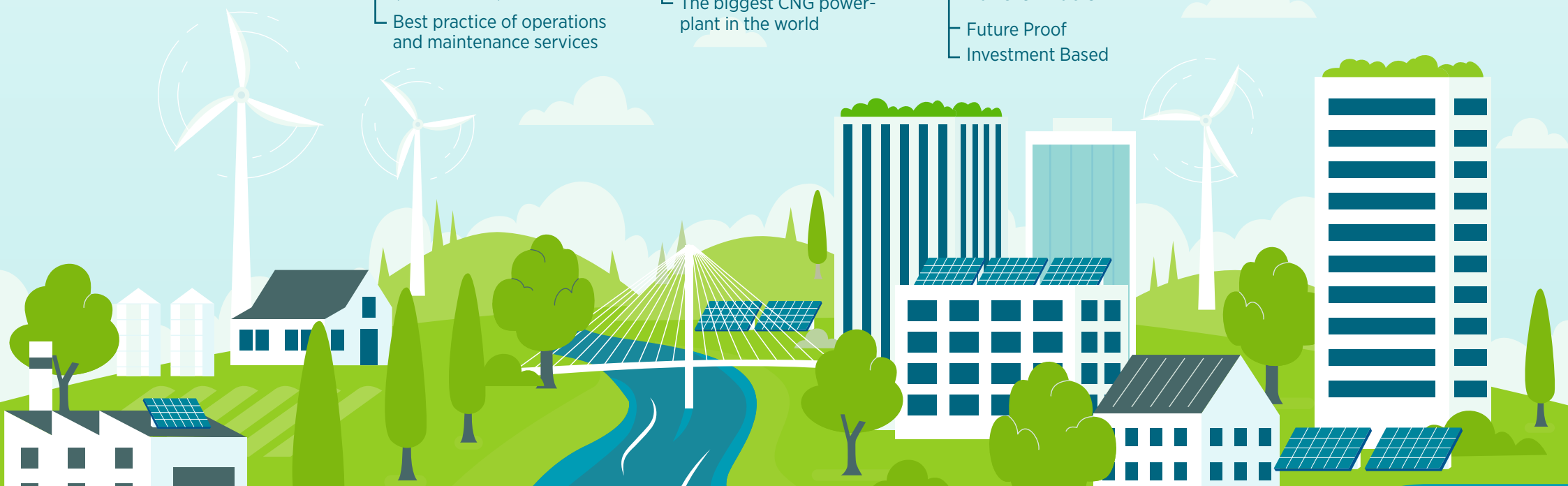
Corporate Transformation II

- Future Proof
- Investment Based

2024-2028

Strengthening The Base, Expanding The Business

- Digital Transformation & Operation Excellence
- Growth
- Net Zero Emission
- Sustainability



Increase in Power Plant Capacity

Build IPP Power Plant:

- Development project according to RUPTL 2021–2030: 6,3 GW
- Development of Additional Demand: 3,5 GW
- Power Plant Acquisition: 265 MW

Operation & Maintenance (O&M)

- CFPP, GTPP/CCPP, GEPP, DEPP, SPP, PLN's SPP & DEPP
- IPP's Power Plant, Captive Power
- Overseas Power Plant
- Transmission & Substation

Maintenance Repair Overhaul (MRO)

- CFPP, GTPP/CCPP, GEPP, DEPP, SPP and HPP
- IPP's Power Plant and Captive Power
- Overseas Power Plant
- Transmission & Substation
- Other Manufacture and Utility Industry
- UMRO Workshop

Engineering Procurement Construction (EPC)

- Power Plant Project of PLN Group
- Transmission and Substation Project of PLN Group
- Relocation of Existing Power
- Remote Solar Power Plant
- Plant Outside PLN Group Project

Sustainable Solution

- FABA (Fly Ash Bottom Ash), Asset Property, Demin Water, Carbon Trading, Hydrogen

Sparepart / Material

- Power Plants of PLN Group
- Transmission, Substation and Distribution of PLN
- Group Outside PLN Group

79
Total Existing Power
Plants Served

Power Plant Digitalization and Asset Management

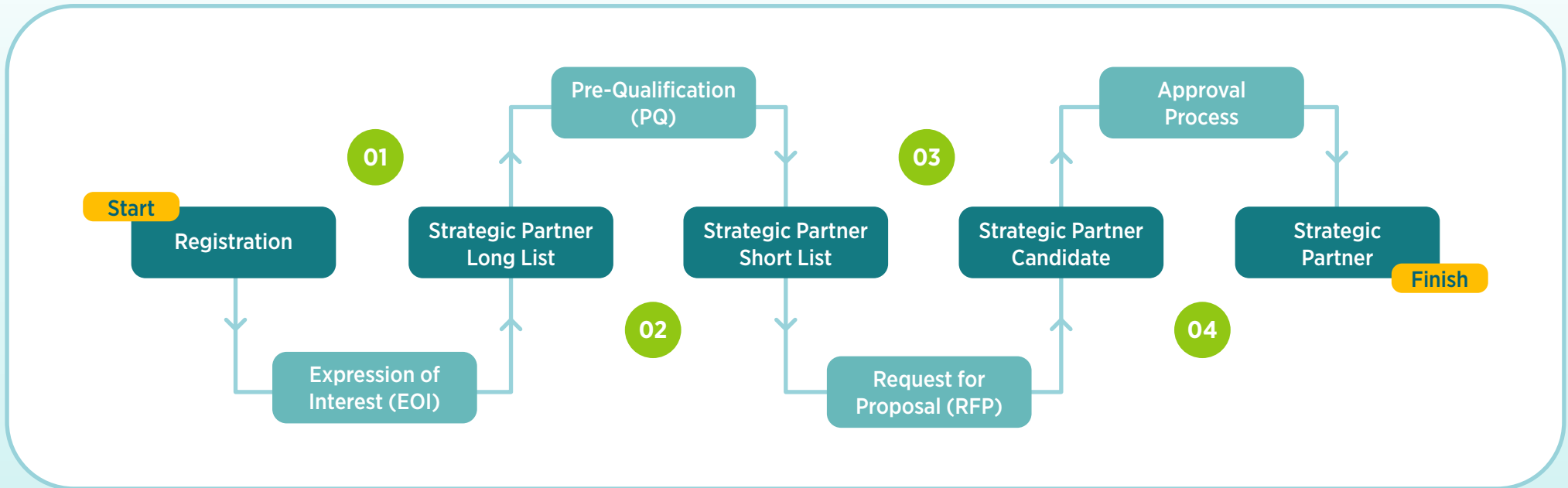
- Power Plant Digitalization: Digital Integration through big data, IoT, AI, & machine learning
- Asset Management System: HSE Management System (HSE), Anti Bribery Management System (I-Care), Enterprise Asset Management (EAM), Security Management System (SMP)
- The Nusantara Control Center (NuCC) Program serves as the Command Center for managing Nusantara Power's Renewable Energy Plants and IPP Renewable Plants, leveraging 4IR (Fourth Industrial Revolution) technologies

Green Energy Business

- DEPP Revitalization with SPP+BESS Hybrid
- Build SPP to reduce Self Consumption
- Biomass Co-firing implementation on CFPP
- Gasification for upgrading the existing power plant
- Green Hydrogen Ecosystem: green hydrogen plant, hydrogen fuel cell generator di isolated system, dan fuel cell electric vehicle

25 CFPP Units Biomass Co-firing
Implementation

PLN NP Business Solutions



Overview of PLN NP Partnership Process

Strategic Partner Selection Process in accordance with regulations of PT PLN Nusantara Power is as follows:

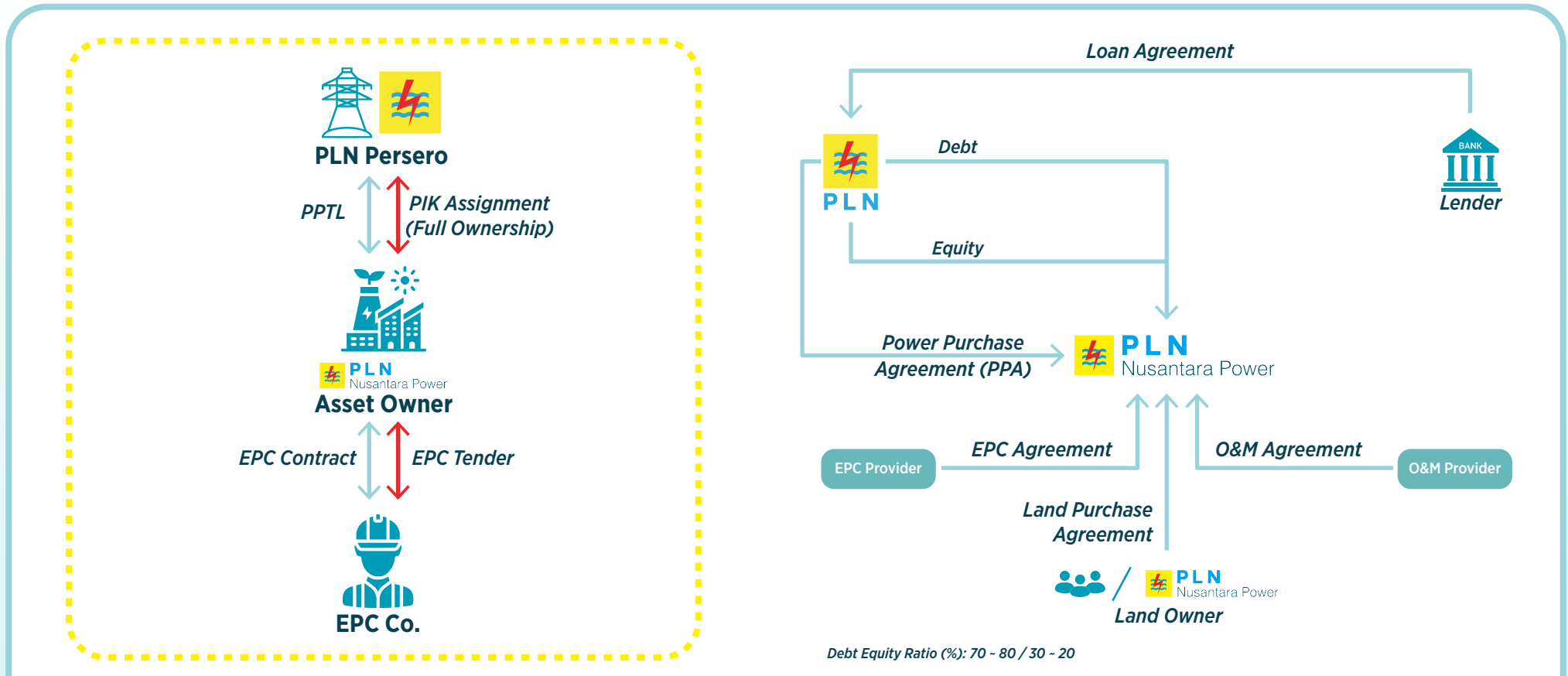
- 1 Edaran Direksi of PT PLN Nusantara Power No. 0004.E/012/DIR/2022 on Policy of Project Selection and Strategic Partner in Business Development.
- 2 PT PLN Nusantara Power Directors Regulation No. 024.P/019/DIR/2020 on Policy of Project Selection and Strategic Partner in Business Development.



Key Points of PLN NP Partnership Process

Each Company is expected to pay attention to the following important

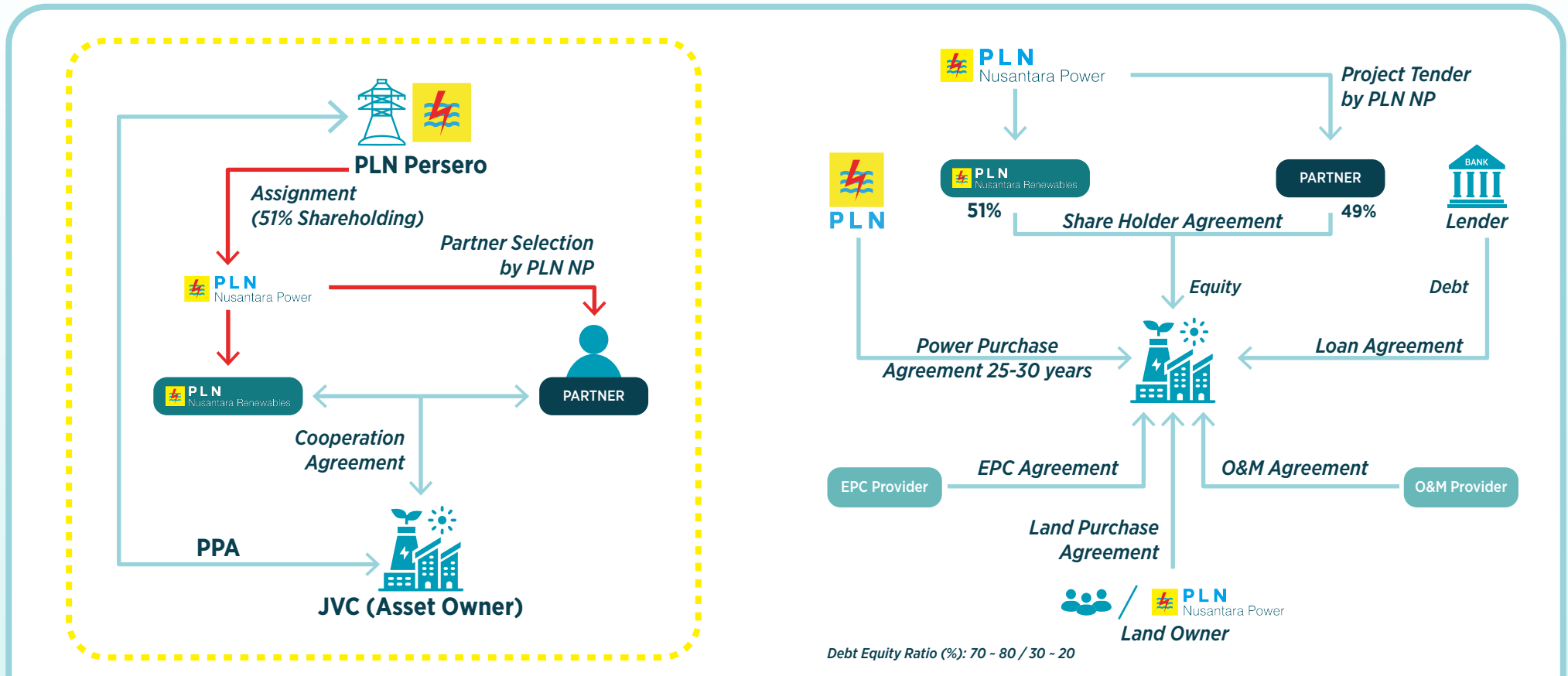
- 1 The participating company in the PLN NP Strategic Partner selection process **must be the same entity** from the initial registration process to the final stage of the Strategic Partner approval.
- 2 The required data and documents from the companies may be used:
 - The data and documents from **its affiliate**. The Company must have **more than ninety percent (> 90%)** of shares in its affiliate.
 - The data and documents from **the parent company**. The Parent company must have **a minimum of fifty-one percent (≥ 51%)** of shares in the Company.
- 3 All companies **must fulfill** all requests for the required data and documents in the EOI, PQ, and RFP processes.
- 4 We expect every company **to comply** with the terms and regulations of **electricity** prices in 4 Indonesia
- 5 The company can be a single entity and/or a consortium according to the Project's needs.
- 6 Every EPC contractor (local or foreign) nominated by the Companies is expected to complete all licensing documents according to the laws and regulations in Indonesia (if any).



Full Ownership

Business Scheme

Through the assignment mechanism, namely the purchase of electricity from PLN AP without private sector involvement, where the project will be fully developed by PLN AP.

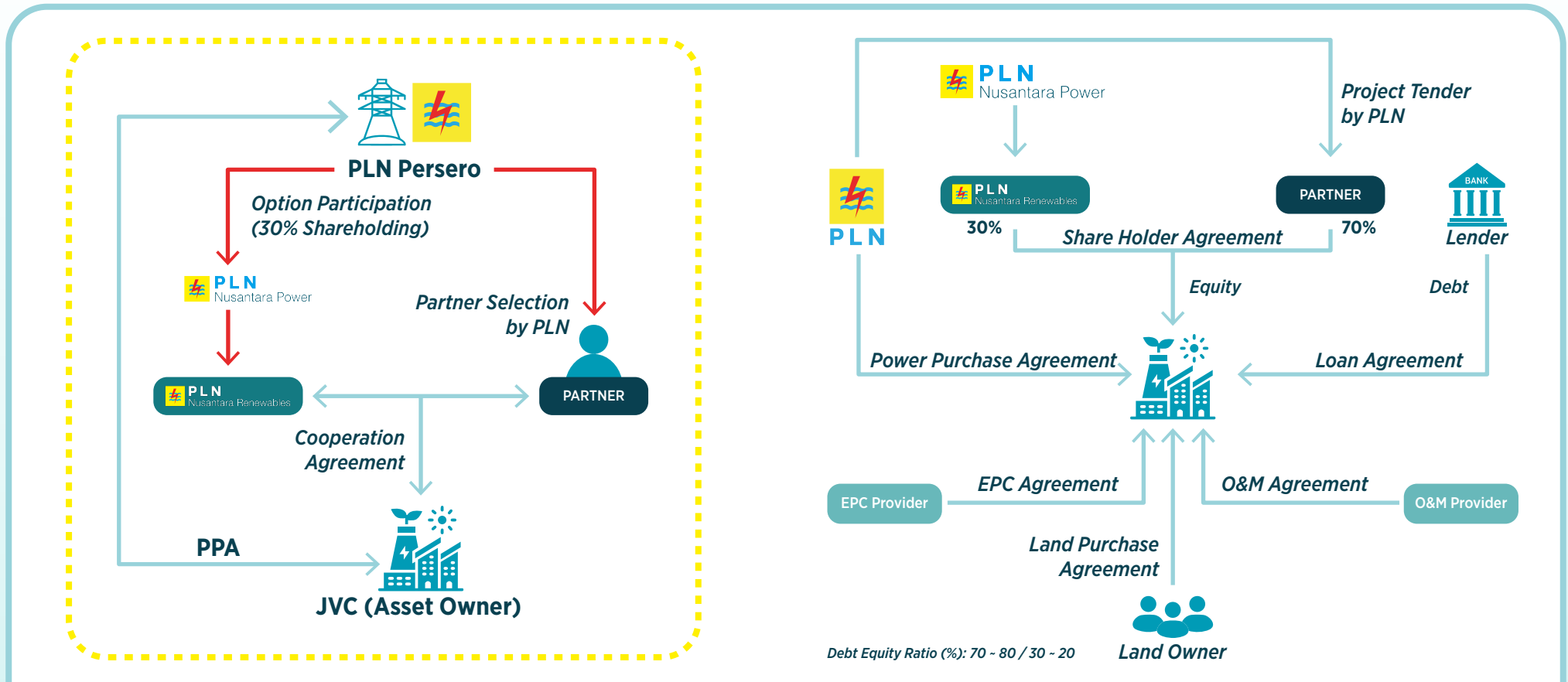


IPP Majority Shareholding

Business Scheme

Through the assignment mechanism, namely the purchase of electricity from JVC between AP/PLN Affiliates and Private Entities, with PLN Group holding a 51% share.






IPP Minority Shareholding


Business Scheme

Through an assignment mechanism, namely the purchase of electric power from a JVC between PLN/AP Affiliates and the Private Sector, with PLN Group holding a 30% share.

Additional Demand Project Briefs

 Additional Demand is **Non-Listed RUPTL project(s)**

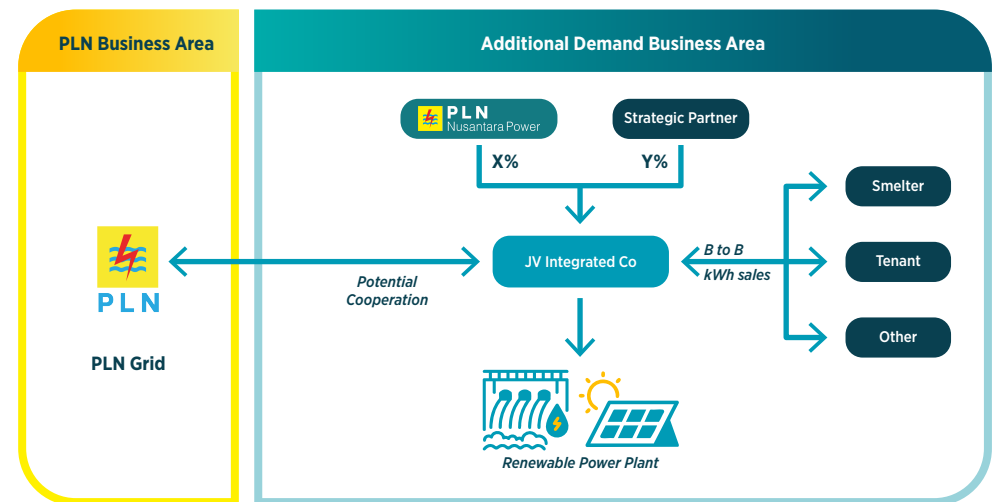
 In Additional Demand, **Strategic Partner(s)** is the customer or having business relation with the customer and **secure the potential demand**

 Additional Demand is non-regular project that might be executed through **business-to-business** arrangements, where **PLN Nusantara Power could be the minority shareholder or majority shareholder in the project(s)**

 PLN Nusantara Power together with the strategic partner will conduct the project development by **optimizing each party's resource and competency**



Example of Additional Demand Business Scheme



- 1 JV Co will handle electricity business in the industrial area
- 2 JV Co will develop power plants for electricity demand inside industrial area
- 3 PLN Nusantara Power together with Strategic Partner will collaborate to invest for the electricity infrastructure
- 4 JV Co has potential cooperation to strengthen existing PLN Grid

Frequently Asked Questions (FAQ)

▶ What is the process of partnership for minority scheme (PLN NP)?

Authority for projects with minority scheme starts from the procurement process to selecting the winner, which is the authority of PT PLN (Persero) as the holding company. As a Subholding, PLN Nusantara Power will be assigned as a minority shareholder who will partner with the selected winner.

▶ I have entered the Longlist but why was I not invited to participate in the PQ process?

Invitations to participate in the PQ Process are given to all companies included in the Longlist and meet certain types of projects. Therefore, the preferred role, area of interest, and experience forms are very important for all Company registrants to proceed to the next stage, the PQ stage.

▶ Will the criteria in the PQ be given to all companies?

PQ criteria will be given only to companies that are invited to take part in PQ and meet the conditions in 2 points above.



Every company is responsible for every information provided from the beginning of the EoI registration to the end of partnership process.

